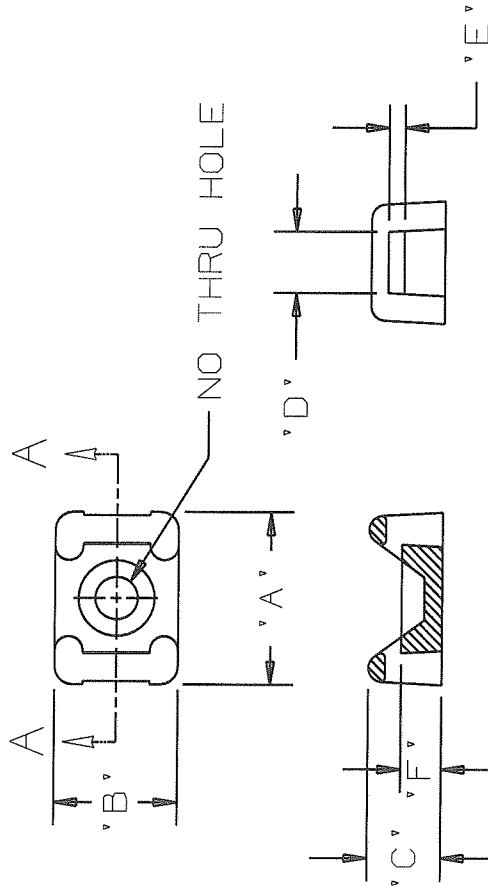


THIS COPY IS PROVIDED ON A RESTRICTED BASIS AND IS NOT TO BE USED IN ANY WAY DETRIMENTAL TO THE INTERESTS OF PANDUIT CORP.

PANDUIT PART NO.	MATERIAL SUFFIX	'A'	'B'	'C'	'D'	'E'	'F'	USE WITH THESE CABLE TIE CROSS SECTIONS	WEIGHT (g) lbs/100 pcs.
TM1A	NONE	.513 (13.0)	.316 (8.0)	.230 (5.8)	.130 (3.3)	.067 (1.7)	.125 (3.2)	MINIATURE ONLY	.07 (31.8)
TM2A	NONE -39	.630 (16.0)	.425 (10.8)	.275 (7.0)	.215 (5.5) ±.020 ±(.5)	.060 (1.5) ±.020 ±(.5)	.155 (3.9)	MINIATURE INTERMEDIATE STANDARD	.15 (67.9)
TM3A	NONE	.875 (22.2)	.620 (15.8)	.375 (9.5)	.320 (8.1) ±.020 ±(.5)	.088 (2.2) ±.020 ±(.5)	.210 (5.3)	MINIATURE INTERMEDIATE STANDARD LIGHT HEAVY	.36 (163.4)



SECTION A - A

MATERIAL SUFFIX	MATERIAL	COLOR
NONE	NYLON 6/6	NATURAL
-39	HEAT STABILIZED NYLON	NATURAL

NOTE:

- SEE CURRENT PRICE SHEET FOR PART NUMBER SUFFIX DESIGNATION FOR PACKAGE SIZE.
- CUSTOMER MUST SUPPLY ADHESIVE FOR FASTENING.

DIMENSIONS IN BRACKETS ARE METRIC [mm]

CAD FILENAME/LAYERS G03597JV_DC_GB0239CM/00B



TINLEY PARK, ILLINOIS

TIE MOUNT - TM_A

REV	DATE	BY	CHK	DESCRIPTION	ECN	R	CUST	SUP
00B	10/01/08	ARHA		-39 MATERIAL ADDED; TABLES MODIFIED; CHANGED FILENAME AND REVISION STYLE.	GB0239CM		00B	
7	8-16-02	LGG		CHG TM3A DIM ON 'E' (WAS .089(2.3) ADDED ± TO 'E' & 'D' FOR TM2A & TM3A	GB0239CM		7	
6	07-31-00	GDH		TM3A DIM. 'E' WAS: .080(12.0), ±.020(1.5)	GB0239CM		6	
5	7-19-99	CGSM		REMOVED BOLD FONTS FROM DIM TABLE	GB0239CM		5	
DRWN BY	DATE	CHK'D	MAT'L	SCALE	DRAWING NO.			
GDH	02-20-95	KLN	NYLON 6/6 NATURAL	NONE	GBO239CM			
UNLESS OTHERWISE SPECIFIED, DIMENSIONAL TOLERANCES ARE: (.X) ±0.05 (1.3) (1.XXX) ±0.10 (0.25) (.XX) ±0.02 (0.5) ANGLES ± 5°					UNLESS OTHERWISE SPECIFIED, ALL DIMENSIONS ARE GIVEN IN INCHES, THIRD ANGLE PROJECTION.			
DRAWN BY: GDH					SCALE: NONE			
DATE: 02-20-95					DRAWING NO. GBO239CM			
CHK'D: KLN					SIZE: A			